

Skene Group Ltd Depots in Central Scotland



Headquarters & Construction Services (Demolition, Asbestos Removal, Crushing and Recycling)
 Skene House, Viewfield Road, Viewfield Ind. Estate **Glenrothes**, Fife KY6 2RD **T: 01592 - 632230 F: 01592 - 772300**

Lomond Quarry & Ready Mixed Concrete (Sand and Gravel, Tipping Facilities, Ready Mixed Concrete)
 Falkland Hills Road, **Leslie**, Fife KY6 3HD **T: 01592 - 632230 F: 01592 - 772300**

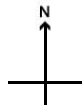
Devon Quarry (Hard Rock)
 Porters Brae, **Kennoway**, Fife KY8 5SQ **T: 01592 - 632230 F: 01592 - 772300**

Concrete Products (Concrete Block and Ready Mix Manufacturers)
 Phoenix Works, **Crossgates**, Fife KY4 8HF **T: 01383 - 510248 F: 01383 - 610096**

Cowdenhill Quarry (Hard Rock Quarrymasters)
 Banknock, **Bonnybridge**, Stirlingshire FK4 1TX **T: 01324 - 841133 F: 01324 - 849452**

Methil Docks (Shipping Facility)
T: 01592 - 632230 F: 01592 - 772300

Soutra Mains Quarry (Hard Rock Quarrymasters)
 Fala, **Pathhead**, Blackshiels, Midlothian, EH37 5TF
 To place an order **T & F: 01875 - 833388**
 For pricing and enquiries **T: 01592 - 632230 F: 01592 - 772300**



ROSYTH to
 Zoobridge 18 hrs